

***JUNE***  
**2020**

# **MONTHLY TOURIST ARRIVALS REPORT**

**SRI LANKA TOURISM DEVELOPMENT AUTHORITY**

[www.sltda.lk](http://www.sltda.lk)

Photo courtesy of SLTDA, SLRC. Lovingly Sri Lanka programme



## SUMMARY

The total number of international tourist arrivals to Sri Lanka from January to June 2020 was 507,311. No tourist arrivals have been recorded for the month of June 2020 due to the termination of all passenger flights and ship arrivals into Sri Lanka from 18<sup>th</sup> March 2020. Total arrivals recorded from January to June 2019 was 1,008,449. In comparison to January to June last year (2019), a decline of 49.7 % has been recorded for the same period in 2020.

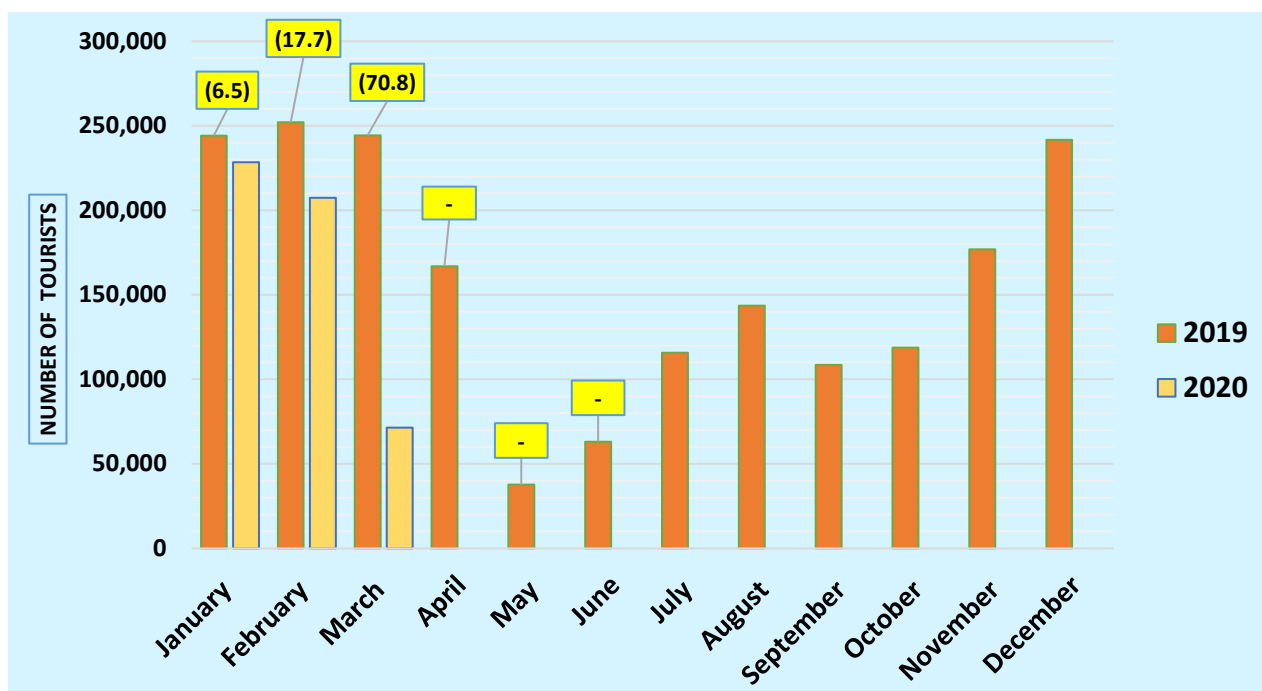
The largest source markets recorded for the period from January to June was India, followed by the United Kingdom and Russian Federation.

During this period almost 94 % of tourists travelled by air to Sri Lanka.

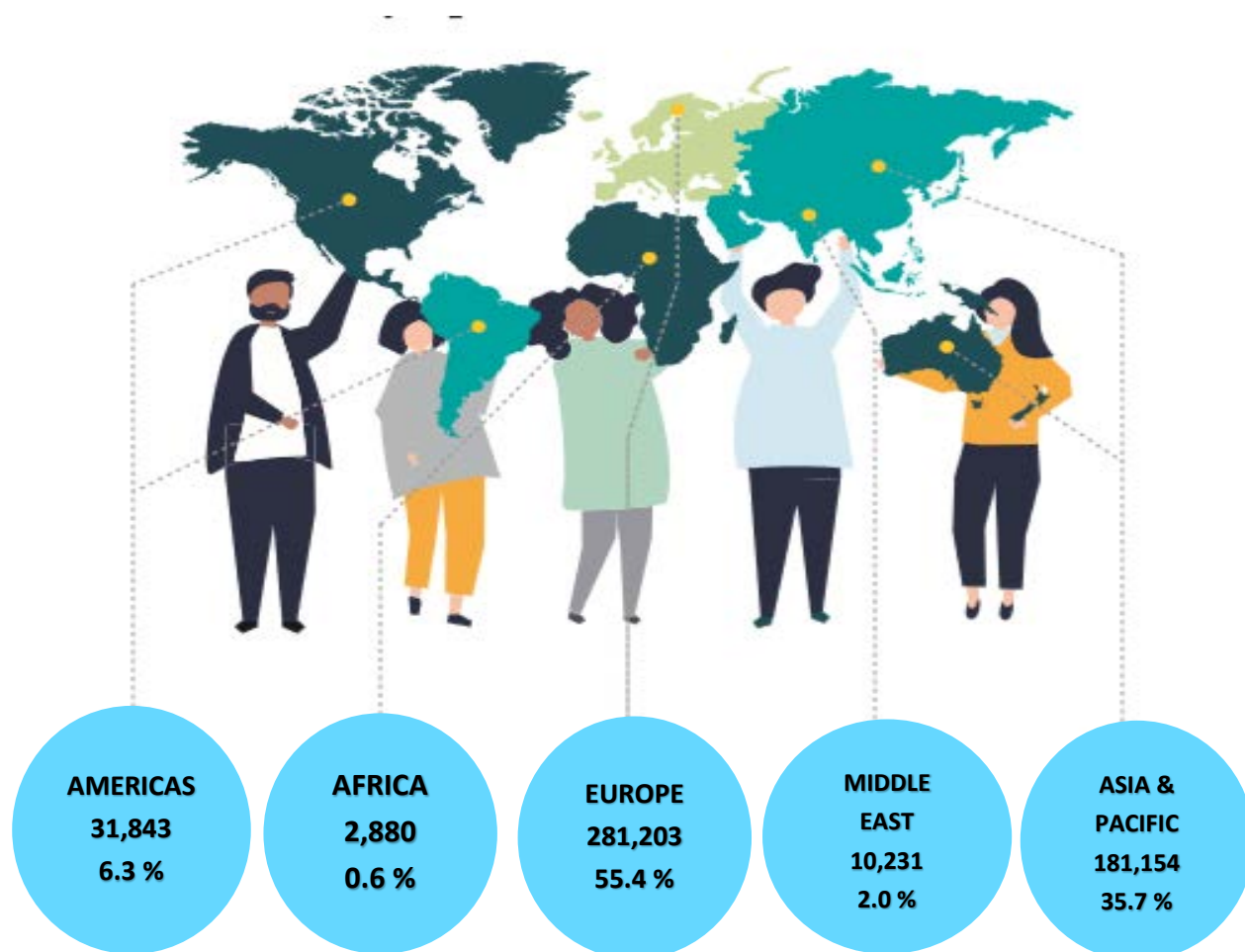
Month	2019	2020	% change 2019/20
January	244,239	228,434	(6.5)
February	252,033	207,507	(17.7)
March	244,328	71,370	(70.8)
April	166,975	0	-
May	37,802	0	-
June	63,072	0	-
July	115,701		
August	143,587		
September	108,575		
October	118,743		
November	176,984		
December	241,663		
<b>Total (Up to June)</b>	<b>1,008,449</b>	<b>507,311</b>	<b>(49.7)</b>
<b>Total</b>	<b>1,913,702</b>		



**Tourist Arrivals – June**  
**Zero (0)**  
*(Due to effect of the outbreak of COVID 19)*



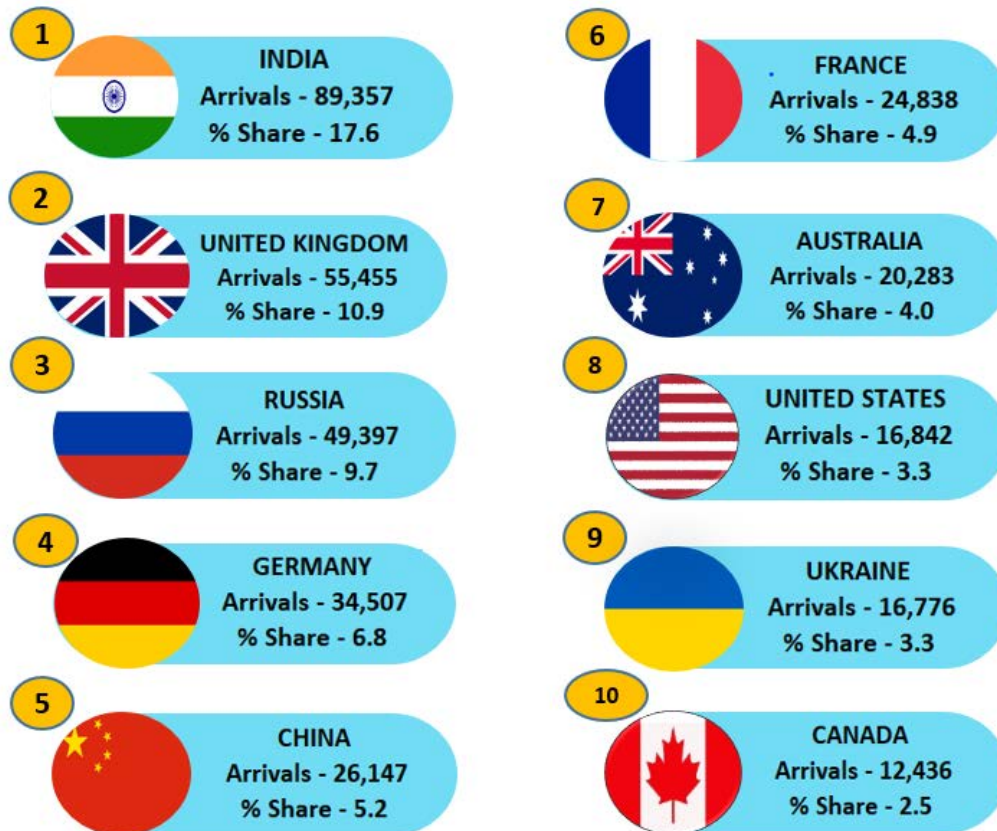
## TOURIST ARRIVALS BY REGION AND PERCENTAGE SHARE JANUARY ~ JUNE 2020



In comparison to the arrivals from January to June last year the highest decline of 56.7% was recorded for Africa while Asia and Pacific recorded a decline of 56.1%. Americas recorded a decline of 54.8% whereas Middle East region recorded a decline of 50.7%. A decline of 43.5% was recorded from Europe. The effect of the outbreak of COVID 19 is clearly evident as all countries have recorded a decline in arrivals from mid-February. However, it is noteworthy that arrivals from countries such as Kazakhstan (85.7%), Bhutan (23.8%), Russian Federation (11.2%) and Poland (6.2%) have recorded an increase for the above period.

## TOP TEN SOURCE MARKETS – JANUARY ~ JUNE 2020

India, United Kingdom, Russia, Germany and China were Sri Lanka's top five international tourist generating markets in the period from January to June this year. India was the largest source of tourist traffic to Sri Lanka with 17.6 % of the total traffic received in above period. United Kingdom accounted for 10.9 % of the total traffic; while Russian Federation, Germany and China accounted for 9.7 %, 6.8 % and 5.2 % respectively. Comparing the top ten markets, the effect of the outbreak of COVID 19 is clearly evident as all countries have recorded a decline in arrivals except Russia. It is noteworthy that China has recorded the highest decline of 73.2%.



Rank	Country of Residence	Tourist Arrivals from January to June 2020			Tourist Arrivals January to June 2019	% Change Jan ~ June 2020/2019
		By Air	By Sea	Total		
1	India	86,639	2,718	89,357	156,872	(43.0)
2	United Kingdom	49,015	6,440	55,455	117,504	(52.8)
3	Russian Federation	48,457	940	49,397	44,422	11.2
4	Germany	32,495	2,012	34,507	71,438	(51.7)
5	China	25,910	237	26,147	97,560	(73.2)
6	France	24,330	508	24,838	55,401	(55.2)
7	Australia	17,896	2,387	20,283	47,079	(56.9)
8	United States	14,349	2,493	16,842	38,690	(56.5)
9	Ukraine	16,043	733	16,776	18,489	(9.3)
10	Canada	11,122	1,314	12,436	26,463	(53.0)

## INTERNATIONAL TOURIST ARRIVALS BY COUNTRY OF RESIDENCE

	January ~ June 2020			Total Tourist Arrivals January to June 2019	% Cha Jan ~ June (2020/19)
	Tourist Arrivals				
	By Air	By Sea	Total		
<b><u>AMERICAS</u></b>	<b>27,585</b>	<b>4,258</b>	<b>31,843</b>	<b>70,463</b>	<b>(54.8)</b>
<b>North America</b>	<b>25,723</b>	<b>3,904</b>	<b>29,627</b>	<b>66,086</b>	<b>(55.2)</b>
Canada	11,122	1,314	12,436	26,463	(53.0)
Mexico	252	97	349	933	(62.6)
United States	14,349	2,493	16,842	38,690	(56.5)
<b>Caribbean &amp; Central America</b>	<b>211</b>	<b>15</b>	<b>226</b>	<b>461</b>	<b>(50.9)</b>
Costa Rica	33	0	33	71	(53.5)
Jamaica	23	2	25	37	(32.4)
Others	155	13	168	353	(52.4)
<b>South America</b>	<b>1,651</b>	<b>339</b>	<b>1,990</b>	<b>3,916</b>	<b>(49.2)</b>
Argentina	352	64	416	882	(52.8)
Brazil	675	200	875	1,630	(46.3)
Chile	232	39	271	578	(53.1)
Colombia	190	11	201	372	(45.9)
Others	202	25	227	454	(50.0)
<b><u>AFRICA</u></b>	<b>2,510</b>	<b>370</b>	<b>2,880</b>	<b>6,646</b>	<b>(56.7)</b>
<b>North Africa</b>	<b>638</b>	<b>51</b>	<b>689</b>	<b>1,310</b>	<b>(47.4)</b>
Morocco	275	36	311	521	(40.3)
Sudan	137	6	143	246	(41.9)
Others	226	9	235	543	(56.7)
<b>Sub-Saharan Africa</b>	<b>1,872</b>	<b>319</b>	<b>2,191</b>	<b>5,336</b>	<b>(58.9)</b>
Kenya	106	4	110	259	(57.5)
Mauritius	132	38	170	314	(45.9)
Nigeria	25	0	25	85	(70.6)
South Africa	1,144	220	1,364	3,691	(63.0)
Others	465	57	522	987	(47.1)

	January ~ June 2020			Total Tourist Arrivals January to June 2019	% Cha Jan ~ June (2020/19)
	Tourist Arrivals				
	By Air	By Sea	Total		
<b>ASIA &amp; PACIFIC</b>	<b>173,837</b>	<b>7,317</b>	<b>181,154</b>	<b>412,450</b>	<b>(56.1)</b>
<b>North East Asia</b>	<b>36,944</b>	<b>376</b>	<b>37,320</b>	<b>125,227</b>	<b>(70.2)</b>
China	25,910	237	26,147	97,560	(73.2)
Japan	6,613	31	6,644	16,703	(60.2)
South Korea	2,428	71	2,499	6,594	(62.1)
Taiwan	1,949	36	1,985	4,259	(53.4)
Others	44	1	45	111	(59.5)
<b>South East Asia</b>	<b>13,496</b>	<b>1,431</b>	<b>14,927</b>	<b>34,608</b>	<b>(56.9)</b>
Cambodia	372	0	372	2,560	(85.5)
Indonesia	948	166	1,114	2,267	(50.9)
Malaysia	3,433	61	3,494	8,155	(57.2)
Myanmar	473	59	532	1,303	(59.2)
Philippines	3,176	1,073	4,249	7,207	(41.0)
Singapore	2,506	39	2,545	6,846	(62.8)
Thailand	1,857	23	1,880	4,709	(60.1)
Vietnam	699	10	709	1,451	(51.1)
Others	32	0	32	110	(70.9)
<b>Oceania</b>	<b>20,122</b>	<b>2,584</b>	<b>22,706</b>	<b>53,240</b>	<b>(57.4)</b>
Australia	17,896	2,387	20,283	47,079	(56.9)
New Zealand	2,130	194	2,324	6,057	(61.6)
Others	96	3	99	104	(4.8)
<b>South Asia</b>	<b>103,275</b>	<b>2,926</b>	<b>106,201</b>	<b>199,375</b>	<b>(46.7)</b>
Afghanistan	146	0	146	207	(29.5)
Bangladesh	1,963	23	1,986	3,813	(47.9)
Bhutan	208	0	208	168	23.8
India	86,639	2,718	89,357	156,872	(43.0)
Iran	645	3	648	1,884	(65.6)
Maldives	9,404	3	9,407	28,352	(66.8)
Nepal	1,248	136	1,384	2,421	(42.8)
Pakistan	3,022	43	3,065	5,658	(45.8)

	January ~ June 2020			Total Tourist Arrivals January to June 2019	% Cha Jan ~ June (2020/19)
	Tourist Arrivals				
	By Air	By Sea	Total		
<b>EUROPE</b>	<b>265,099</b>	<b>16,104</b>	<b>281,203</b>	<b>498,139</b>	<b>(43.5)</b>
<b>Northern Eur.</b>	<b>68,008</b>	<b>7,138</b>	<b>75,146</b>	<b>160,881</b>	<b>(53.3)</b>
Denmark	4,769	136	4,905	11,371	(56.9)
Finland	2,216	82	2,298	4,853	(52.6)
Norway	2,954	65	3,019	7,954	(62.0)
Sweden	6,899	162	7,061	14,043	(49.7)
United Kingdom	49,015	6,440	55,455	117,504	(52.8)
Others	2,155	253	2,408	5,156	(53.3)
<b>Western Eur.</b>	<b>79,156</b>	<b>3,073</b>	<b>82,229</b>	<b>179,200</b>	<b>(54.1)</b>
Austria	4,188	112	4,300	8,980	(52.1)
Belgium	3,274	97	3,371	6,945	(51.5)
France	24,330	508	24,838	55,401	(55.2)
Germany	32,495	2,012	34,507	71,438	(51.7)
Netherlands	8,492	164	8,656	19,685	(56.0)
Switzerland	6,217	172	6,389	16,212	(60.6)
Others	160	8	168	539	(68.8)
<b>Central / Eastern Europe</b>	<b>97,718</b>	<b>2,655</b>	<b>100,373</b>	<b>107,380</b>	<b>(6.5)</b>
Belarus	2,606	32	2,638	3,038	(13.2)
Czech Republic	7,580	19	7,599	12,194	(37.7)
Estonia	1,177	8	1,185	1,499	(20.9)
Hungary	1,493	95	1,588	2,710	(41.4)
Kazakhstan	2,267	66	2,333	1,256	85.7
Lithuania	1,037	17	1,054	1,660	(36.5)
Poland	11,481	427	11,908	11,211	6.2
Romania	1,574	150	1,724	3,144	(45.2)
Russian Federation	48,457	940	49,397	44,422	11.2
Slovakia	1,488	25	1,513	3,090	(51.0)
Ukraine	16,043	733	16,776	18,489	(9.3)
Others	2,515	143	2,658	4,667	(43.0)

	January ~ June 2020			Total Tourist Arrivals January to June 2019	% Cha Jan ~ June (2020/19)
	Tourist Arrivals				
	By Air	By Sea	Total		
<b>Southern / Mediterranean Europe</b>	<b>20,217</b>	<b>3,238</b>	<b>23,455</b>	<b>50,678</b>	<b>(53.7)</b>
Greece	1,092	481	1,573	3,528	(55.4)
Italy	7,135	1,468	8,603	20,535	(58.1)
Portugal	1,377	225	1,602	2,781	(42.4)
Spain	3,255	130	3,385	9,827	(65.6)
Turkey	1,517	604	2,121	2,303	(7.9)
Israel	3,422	134	3,556	6,511	(45.4)
Others	2,419	196	2,615	5,193	(49.6)
<b>MIDDLE EAST</b>	<b>10,139</b>	<b>92</b>	<b>10,231</b>	<b>20,751</b>	<b>(50.7)</b>
Bahrain	543	6	549	985	(44.3)
Egypt	922	34	956	1,728	(44.7)
Iraq	137	1	138	350	(60.6)
Jordan	621	6	627	1,431	(56.2)
Kuwait	822	3	825	1,701	(51.5)
Lebanon	480	3	483	2,297	(79.0)
Oman	1,041	4	1,045	1,864	(43.9)
Qatar	128	1	129	558	(76.9)
Saudi Arabia	4,745	10	4,755	7,105	(33.1)
United Arab Emirates	350	2	352	1,833	(80.8)
Others	350	22	372	899	(58.6)
<b>TOTAL</b>	<b>479,170</b>	<b>28,141</b>	<b>507,311</b>	<b>1,008,449</b>	<b>(49.7)</b>

\* All visitor arrival statistics in this report are from the Department of Immigration & Emigration.

**Sri Lanka suspends tourist arrivals from all countries from 18th March 2020 due to COVID-19**